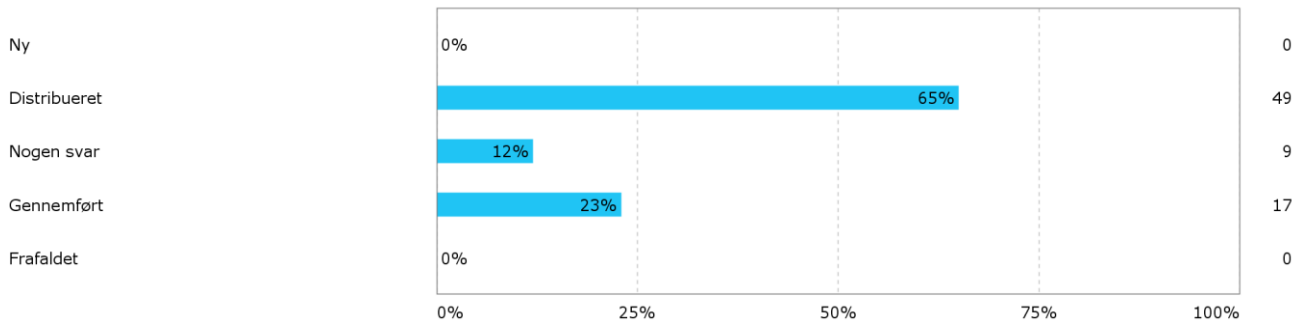
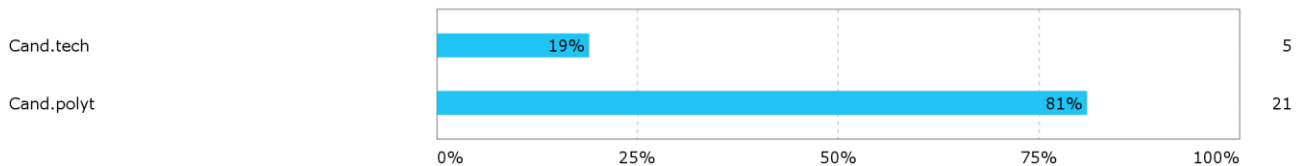


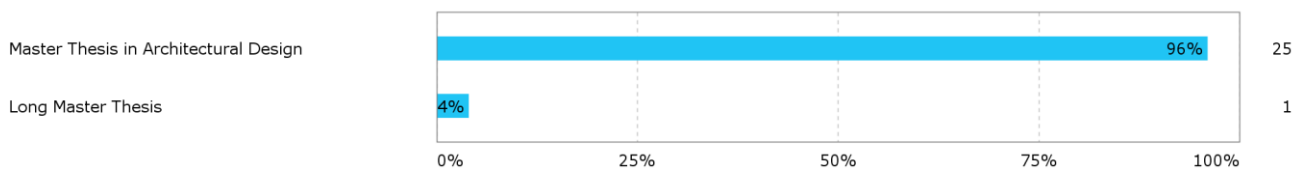
Samlet status



What master-programme do you follow?

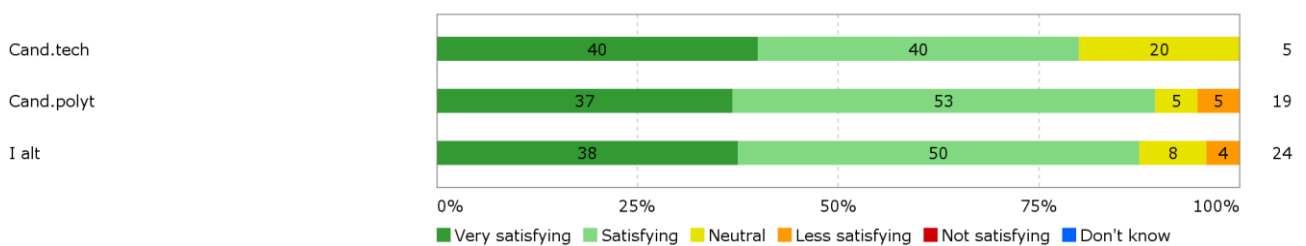


What kind of master thesis did you write?

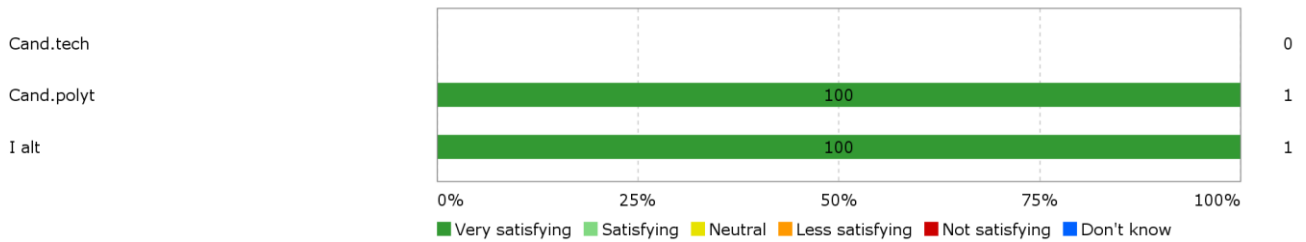


How would you rate your learning outcome of the project module "Master Thesis in Architectural Design"?

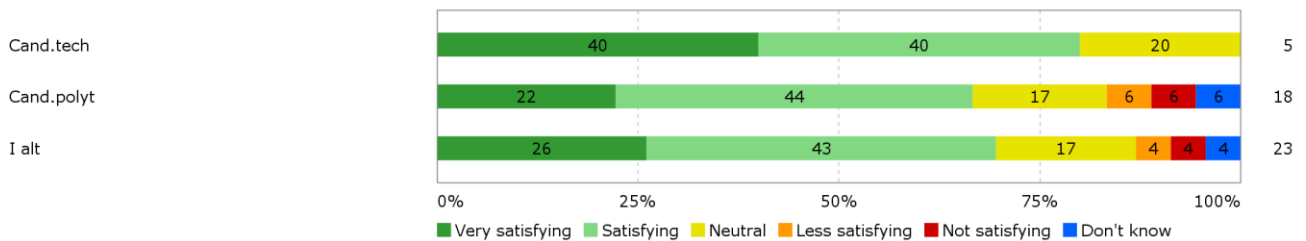
Krydset med: What master-programme do you follow?



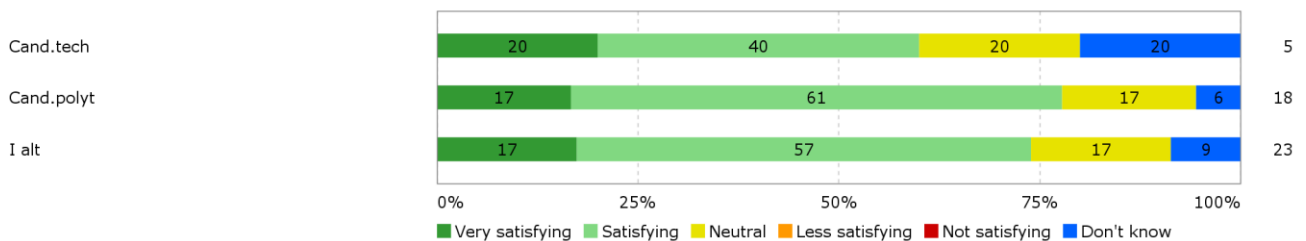
How would you rate your learning outcome of the project module"Long Master Thesis"?



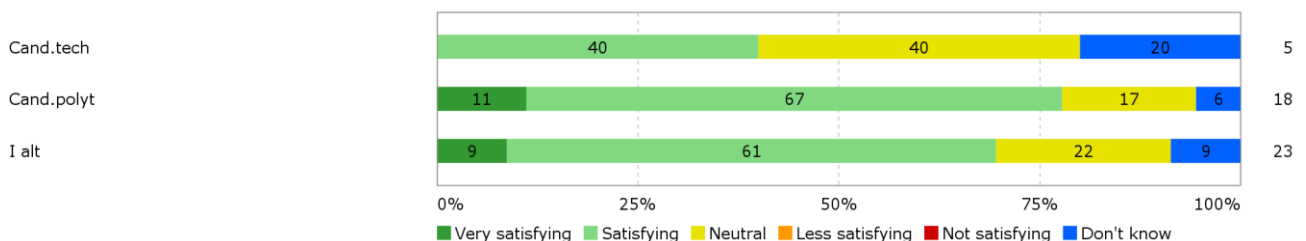
How do the metal- and wood workshop facilities functions in your opinion?



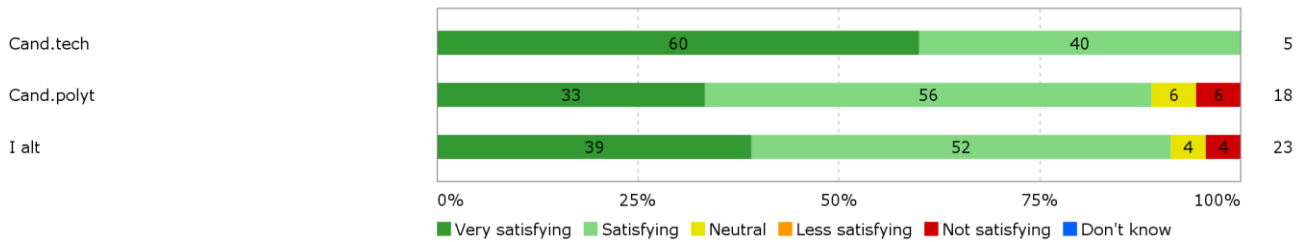
How do the metal- and wood workshop tools and machines functions in your opinion?



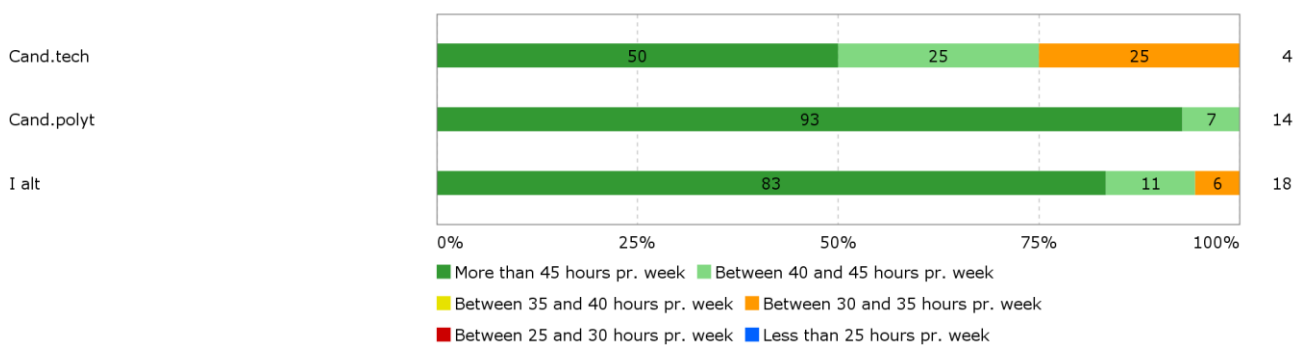
How do the rapid prototyping facilities work in your opinion?



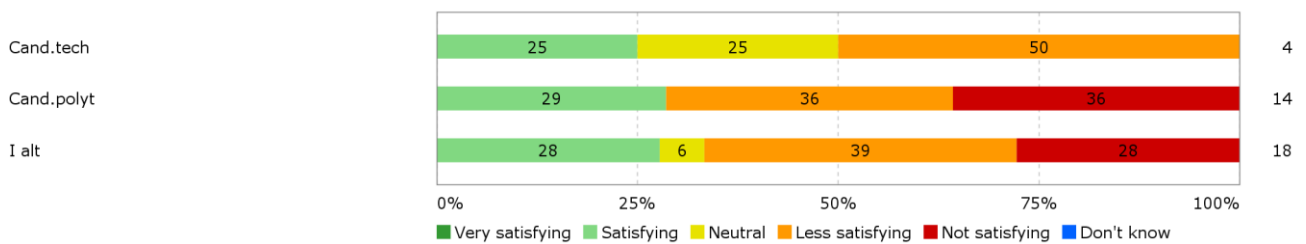
How do you evaluate the service received from the workshop crew?



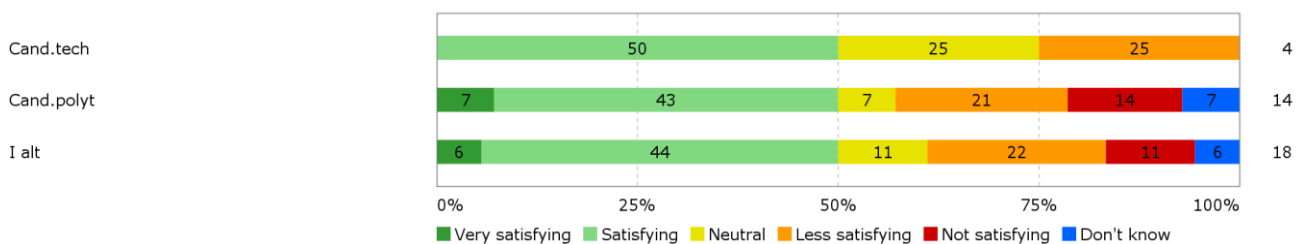
During the semester: how many hours per week did you spend on preparation for and participation in the teaching, project writing, etc.?



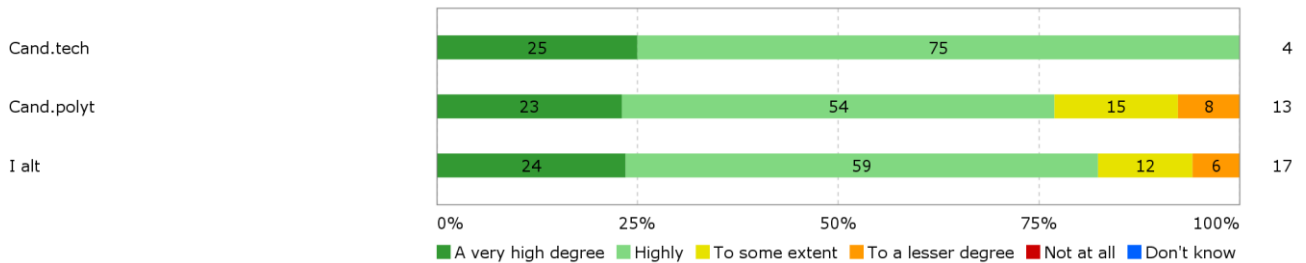
What do you think of the physical and aesthetic conditions that formed the frame for the semester (lecture rooms, indoor climate, equipment, workshops, rooms for breaks, etc.)?



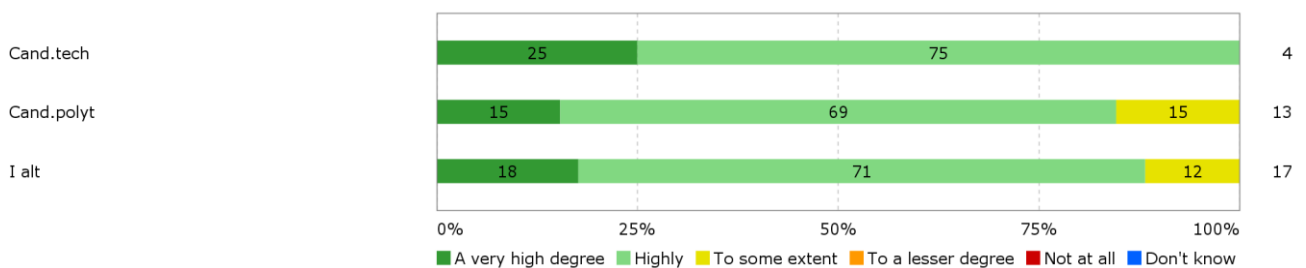
How was the psychological study environment, and how have you been doing, during the study?



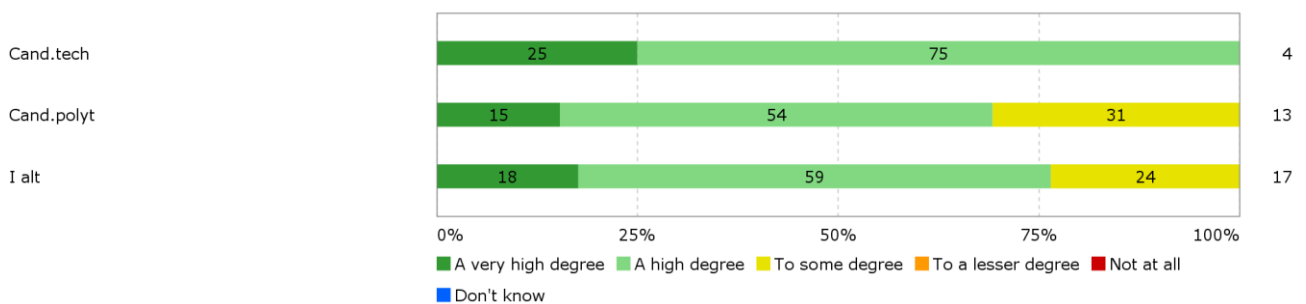
To what degree do you think that the completion of the fourth semester of the master's programme enables you to meet the requirements described in the module description above?



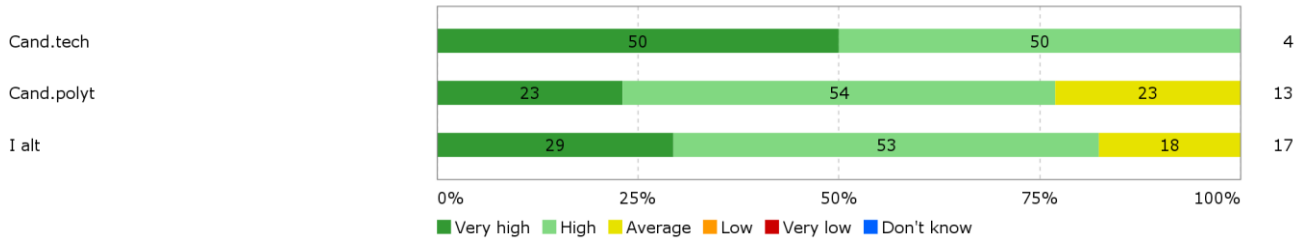
Do you believe that the completion of the four semesters of the master's programme enables you to meet the requirements described in the Curriculum above?



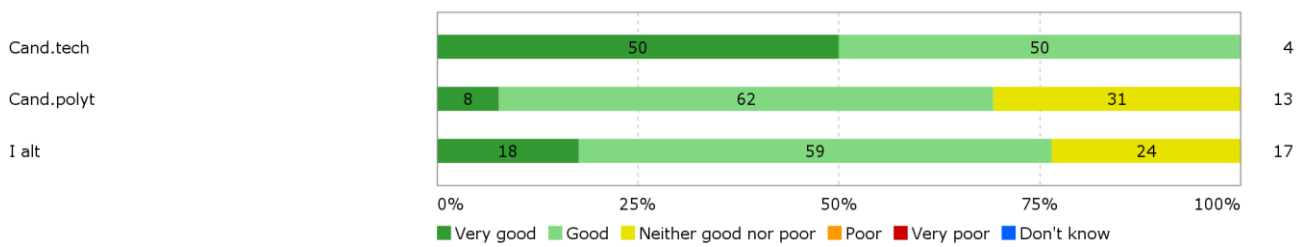
To what extent has the programme lived up to your expectations?



How do you assess the academic level?



How do you assess the coherence of the programme, within semesters as well as between semesters?



How do you assess the distribution of your study load over the course of study 1st - 4th semester?

